

Genome sequence of the Medicago-nodulating *Ensifer meliloti* commercial inoculant strain RRI128

Wayne Reeve^{1*}, Ross Ballard², Elizabeth Drew², Rui Tian¹, Lambert Bräu³, Lynne Goodwin⁴, Marcel Huntemann⁵, James Han⁵, Reddy Tatiparthi⁵, Amy Chen⁶, Konstantinos Mavrommatis⁶, Victor Markowitz⁶, Krishna Palaniappan⁶, Natalia Ivanova⁵, Amrita Pati⁵, Tanja Woyke⁵ & Nikos Kyrpides⁵.

¹ Centre for Rhizobium Studies, Murdoch University, Western Australia, Australia

² South Australian Research and Development Institute, Urrbrae, South Australia, Australia

³ School of Life and Environmental Sciences, Deakin University, Victoria, Australia

⁴ Los Alamos National Laboratory, Bioscience Division, Los Alamos, New Mexico, USA

⁵ DOE Joint Genome Institute, Walnut Creek, California, USA

⁶ Biological Data Management and Technology Center, Lawrence Berkeley National Laboratory, Berkeley, California, USA

*Correspondence: Wayne Reeve (W.Reeve@murdoch.edu.au)

Keywords: root-nodule bacteria, nitrogen fixation, rhizobia, *Alphaproteobacteria*

Ensifer meliloti strain RRI128 is an aerobic, motile, Gram-negative, non-spore-forming rod. RRI128 was isolated from a nodule recovered from the roots of barrel medic (*Medicago truncatula*) grown in the greenhouse and inoculated with soil collected from Victoria, Australia. The strain is used in commercial inoculants in Australia. RRI128 nodulates and forms an effective symbiosis with a diverse range of lucerne cultivars (*Medicago sativa*) and several species of annual medic (*M. truncatula*, *Medicago littoralis* and *Medicago tornata*), but forms an ineffective symbiosis with *Medicago polymorpha*. Here we describe the features of *E. meliloti* strain RRI128, together with genome sequence information and annotation. The 6,900,273 bp draft genome is arranged into 156 scaffolds of 157 contigs, contains 6,683 protein-coding genes and 87 RNA-only encoding genes, and is one of 100 rhizobial genomes sequenced as part of the DOE Joint Genome Institute 2010 Genomic Encyclopedia for Bacteria and Archaea-Root Nodule Bacteria (GEBA-RNB) project.

Introduction

Ensifer meliloti strain RRI128 is used in Australia to produce commercial peat cultures (referred to as Group AL inoculants) mainly for the inoculation of lucerne (*Medicago sativa* L.). Lucerne is sown on about 600, 000 ha annually (A. Humphries pers. com.) and is nearly always inoculated prior to sowing. RRI128 is also used for the inoculation of strand medic (*Medicago littoralis* Loisel) and disc medic (*Medicago tornata* (L.) Miller), a hybrid of the two former species, and bokhara clover (*Melilotus albus* Medik). RRI128 has been used commercially since 2000 when it replaced strain WSM826 [1]. Strain RRI128 was isolated from a nodule from the roots of barrel medic (*Medicago truncatula* Gaertn) growing in the greenhouse and

inoculated with an alkaline sandy soil (pH_{CaCl2} 7.6) collected by J. Slattery, near Tempy, Victoria.

The strain was selected for use in commercial inoculants following assessment of its nitrogen fixation capacity (effectiveness), growth on acidified agar and saprophytic competence in an *in-situ* soil study [2], with supporting data of satisfactory performance at ten field sites. Additional testing has shown RRI128 to be effective on 28 cultivars of lucerne (Ballard unpub. data). It also forms effective symbiosis with a range of strand and disc medics [2] which show symbiotic affinity with lucerne [3,4].

Soil acidity has long been recognized as a constraint to lucerne nodulation [5] with some evidence that strains of *E. meliloti* have less acidity

tolerance than *Ensifer medicae*, possibly due to their association with *Medicago* species that favor neutral to alkaline soils [6]. With RRI128, constraints to lucerne nodulation are observed around pH 5. Nodulation of lucerne seedlings inoculated with RRI128 was 42% at pH 5.0 in solution culture experiments [7] and observed to decline rapidly at field sites where $\text{pH}_{\text{CaCl}_2}$ was below 4.7 (Ballard, unpub. data). Other strains (e.g. SRDI672) have increased lucerne nodulation in solution culture at pH 4.8 (61% cf. 12% of lucerne seedlings with nodules) but are probably approaching the limit of acidity tolerance for *E. meliloti* [8].

Stable colony morphology and cell survival on seed make RRI128 amenable to commercial use. RRI128 produces colonies of consistent appearance and with moderate polysaccharide when grown on yeast mannitol agar, enabling easy visual assessment of culture purity. It differs in this regard from the strain it replaced (WSM826) which produced 'dry' and 'mucoid' colony variants, in common with many of the strains that nodulate lucerne and medic [9]. When applied correctly RRI128 has been shown to survive at more than 10,000 cells per lucerne seed at six weeks after inoculation [10]. Good survival may well be characteristic of *E. meliloti*, since former inoculant strain WSM826 is equally competent in this regard [11,12].

Here we present a preliminary description of the general features of *E. meliloti* strain RRI128 together with its genome sequence and annotation.

Classification and general features

Ensifer meliloti strain RRI128 is a motile, non-sporulating, non-encapsulated, Gram-negative rod

in the order *Rhizobiales* of the class *Alphaproteobacteria*. The rod-shaped form varies in size with dimensions of approximately 0.5 μm in width and 1.0-2.0 μm in length (Figure 1A). It is fast growing, forming colonies within 3-4 days when grown on TY [13] or half strength Lupin Agar ($\frac{1}{2}\text{LA}$) [14] at 28°C. Colonies on $\frac{1}{2}\text{LA}$ are opaque, slightly domed and moderately mucoid with smooth margins (Figure 1B).

Minimum Information about the Genome Sequence (MIGS) is provided in Table 1. Figure 2 shows the phylogenetic neighborhood of *Ensifer meliloti* strain RRI128 in a 16S rRNA gene sequence based tree. This strain has 100% sequence identity (1366/1366 bp) at the 16S rRNA sequence level to the fully sequenced *E. meliloti* Sm1021 [30] and 99% 16S rRNA sequence (1362/1366 bp) identity to the fully sequenced *E. medicae* strain WSM419 [31].

Symbiotaxonomy

Ensifer meliloti strain RRI128 forms nodules on (Nod⁺) and fixes N₂ (Fix⁺) with *Medicago sativa*, *Melilotus albus* and *Trigonella balansae* (Boiss. and Reuter). It also forms effective symbiosis with several species of annual medic (*M. truncatula*, *M. littoralis* and *M. tornata*) that happen to be closely related to each other based on their ability to be hybridized [5] and morphological and nucleotide sequence analyses of their relatedness [32]. RRI128 forms ineffective (white) nodules with *Medicago polymorpha*, a species that is generally recognized to have a more specific rhizobial requirement for effective symbiosis than *Medicago sativa* and *Medicago littoralis* [4,33] (Table 2).

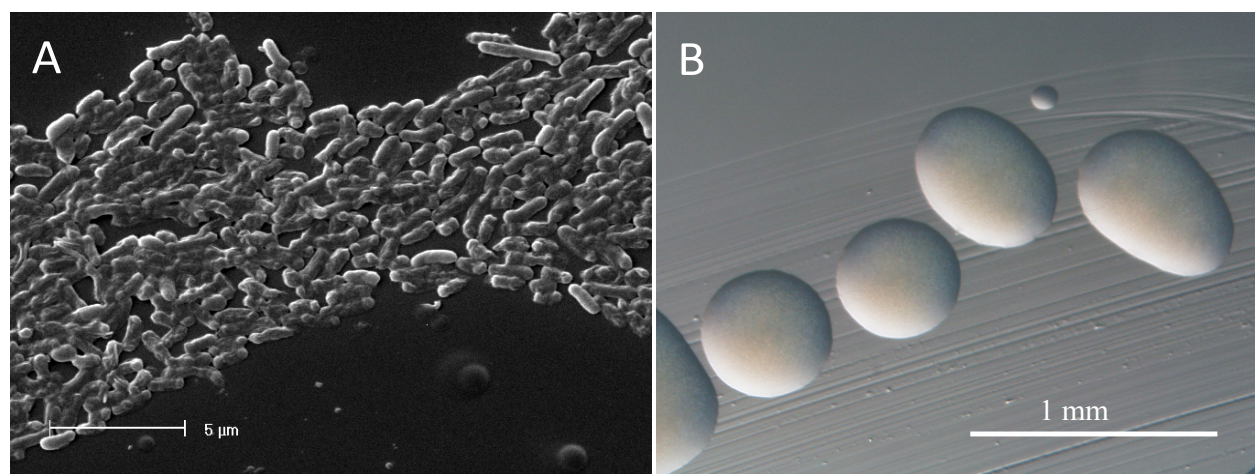


Figure 1. Images of *Ensifer meliloti* strain RRI128 using (A) scanning electron microscopy and (B) light microscopy to show the colony morphology on TY plates.

Table 1. Classification and general features of *Ensifer meliloti* strain RRI128 according to the MIGS recommendations [15,16]

MIGS ID	Property	Term	Evidence code
		Domain <i>Bacteria</i>	TAS [15,16]
		Phylum <i>Proteobacteria</i>	TAS [17]
		Class <i>Alphaproteobacteria</i>	TAS [18]
	Current classification	Order <i>Rhizobiales</i>	TAS [19]
		Family <i>Rhizobiaceae</i>	TAS [20]
		Genus <i>Ensifer</i>	TAS [21,22]
		Species <i>Ensifer meliloti</i>	TAS [23,24]
		Strain RRI128	
	Gram stain	Negative	IDA
	Cell shape	Rod	IDA
	Motility	Motile	IDA
	Sporulation	Non-sporulating	NAS
	Temperature range	Mesophile	NAS
	Optimum temperature	28°C	NAS
	Salinity	Non-halophile	NAS
MIGS-22	Oxygen requirement	Aerobic	IDA
	Carbon source	Varied	NAS
	Energy source	Chemoorganotroph	NAS
MIGS-6	Habitat	Soil, root nodule, on host	IDA
MIGS-15	Biotic relationship	Free living, symbiotic	IDA
MIGS-14	Pathogenicity	Non-pathogenic	NAS
	Biosafety level	1	TAS [25]
	Isolation	Root nodule	IDA
MIGS-4	Geographic location	Tempy, Vict., Australia	IDA
MIGS-5	Soil collection date	Circa 1995	IDA
MIGS-4.1	Latitude	-35.1833	IDA
MIGS-4.2	Longitude	142.3833	IDA
MIGS-4.3	Depth	0-10 cm	IDA
MIGS-4.4	Altitude	Not reported	

Evidence codes – IDA: Inferred from Direct Assay; TAS: Traceable Author Statement (i.e., a direct report exists in the literature); NAS: Non-traceable Author Statement (i.e., not directly observed for the living, isolated sample, but based on a generally accepted property for the species, or anecdotal evidence). These evidence codes are from the Gene Ontology project [26].

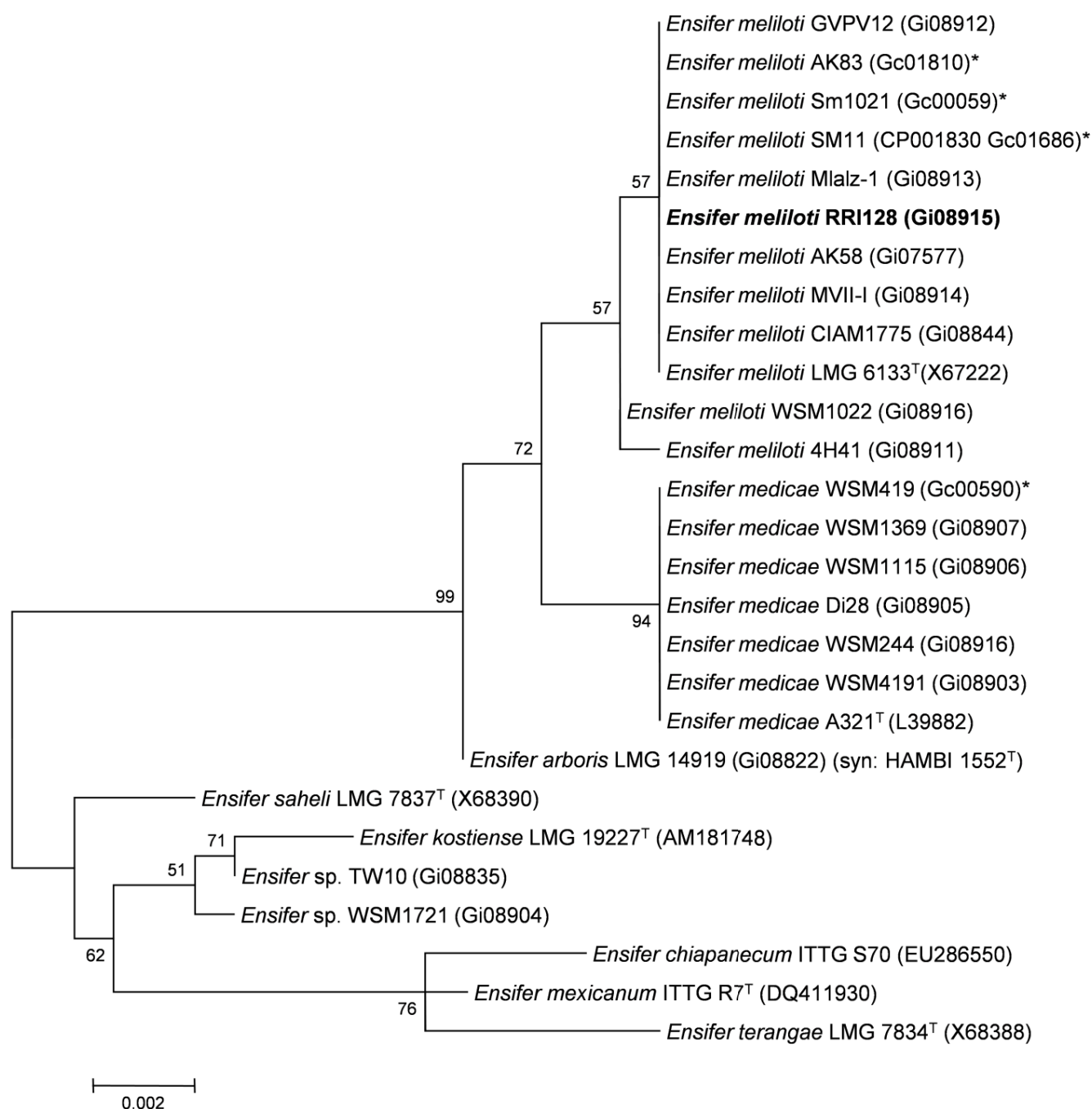


Figure 2. Phylogenetic tree showing the relationship of *Ensifer meliloti* strain RRI128 (shown in bold) with some of the root nodule bacteria in the order *Rhizobiales* based on aligned sequences of the 16S rRNA gene (1,307 bp internal region). All sites were informative and there were no gap-containing sites. Phylogenetic analyses were performed using MEGA [27], version 5.05. The tree was built using the maximum likelihood method with the General Time Reversible model. Bootstrap analysis [28] with 500 replicates was performed to assess the support of the clusters. Type strains are indicated with a superscript T. Brackets after the strain name contain a DNA database accession number and/or a GOLD ID (beginning with the prefix G) for a sequencing project registered in GOLD [29]. Published genomes are indicated with an asterisk.

Table 2. Compatibility of RRI128 with various *Medicago* and allied genera for nodulation (Nod) and N₂-fixation (Fix).

Species name	Cultivar or line	Common Name	Growth Type	Nod	Fix	Reference
<i>Medicago sativa</i>	*28 cultivars	Lucerne, Alfalfa	Perennial	+	+	[2]
<i>M. littoralis</i>	Harbinger, Herald, Angel	Strand medic	Annual	+	+	[2]
<i>M. tornata</i>	Tornafield, Rivoli	Disc medic	Annual	+	+	[2]
<i>M. tornata</i> × <i>littoralis</i>	Toreador	Hybrid disc medic	Annual	+	+	[2]
<i>M. truncatula</i>	Jester	Barrel medic	Annual	+	+	IDA
<i>M. polymorpha</i>	Scimitar	Burr medic	Annual	+(w)	-	IDA
<i>Trigonella balansae</i>	SA5045, SA32999, SA33025	Sickle fruited fenugreek	Annual	+	+	[34]
<i>Melilotus albus</i>	SA19917, SA35627, SA34665	Bokhara clover	Biennial	+	+	IDA

*28 cultivars tested: Aquarius, Aurora, Cropper 9, Cuff 101, Eureka, Genesis, Hallmark, Hunterfield, Hunter River, Jinderra, ML 99, PL 55, PL 60, PL 69, Prime, SARDI Five, SARDI Seven, SARDI Ten, Sceptre, Sequel, Sequel-HR, Siriver, Trifecta, UQL1, Venus, WL525HQ, 54Q53 and 57Q75.

(w) indicates white nodules.

IDA: Inferred from Direct Assay; evidence code from the Gene Ontology project [26]

Genome sequencing and annotation

Genome project history

This organism was selected for sequencing on the basis of its environmental and agricultural relevance to issues in global carbon cycling, alternative energy production, and biogeochemical importance, and is part of the Community Sequencing Program at the U.S. Department of Energy, Joint Genome Institute (JGI) for projects of relevance to agency missions. The genome project is deposited in the Genomes OnLine Database [29] and an improved-high-quality-draft genome sequence in IMG/GEBA. Sequencing, finishing and

annotation were performed by the JGI. A summary of the project information is shown in Table 3.

Growth conditions and DNA isolation

Ensifer meliloti strain RRI128 was cultured to mid logarithmic phase in 60 ml of TY rich medium on a gyratory shaker at 28°C [35]. DNA was isolated from the cells using a CTAB (Cetyl trimethyl ammonium bromide) bacterial genomic DNA isolation method [36].

Table 3. Genome sequencing project information for *Ensifer meliloti* strain RRI128

MIGS ID	Property	Term
MIGS-31	Finishing quality	High-Quality-Draft
MIGS-28	Libraries used	1× Illumina Std library
MIGS-29	Sequencing platforms	Illumina HiSeq 2000
MIGS-31.2	Sequencing coverage	285× Illumina
MIGS-30	Assemblers	with Allpaths, version r39750, Velvet 1.1.04
MIGS-32	Gene calling methods	Prodigal 1.4
	Genbank ID	ATYP00000000
	Genbank Date of Release	September 5, 2013
	GOLD ID	Gi08915
	GenBank ID	X67222
	Database: IMG-GEBA	25132 37091
	Project relevance	Symbiotic N ₂ fixation, agriculture

Genome sequencing and assembly

The genome of *Ensifer meliloti* strain RRI128 was sequenced at the Joint Genome Institute (JGI) using Illumina [37] technology. An Illumina standard shotgun library was constructed and sequenced using the Illumina HiSeq 2000 platform, which generated 13,085,546 reads totaling 1,962 Mb of Illumina data.

All general aspects of library construction and sequencing performed at the JGI can be found at the JGI user home [36]. All raw Illumina sequence data was passed through DUK, a filtering program developed at JGI, which removes known Illumina sequencing and library preparation artifacts (Mingkun, L., Copeland, A. and Han, J., unpublished). The following steps were then performed for assembly: (1) filtered Illumina reads were assembled using Velvet [38], version 1.1.04, (2) 1–3 Kb simulated paired end reads were created from Velvet contigs using wgsim [39], (3) Illumina reads were assembled with simulated read pairs using Allpaths-LG [40] (version r39750).

Parameters for assembly steps were:

- (1) Velvet (Velvet optimizer params: `-v --s 51 --e 71 --i 2 --t 1 --f "shortPaired -fastq $FASTQ" --o "ins_length 250 -min_contig_lgth 500"`)
- (2) wgsim (`-e 0 -1 76 -2 76 -r 0 -R 0 -X 0`), (3) Allpaths-LG (PrepareAllpathsInputs:PHRED64=1 PLOIDY=1 FRAGCOVERAGE=125 JUMPCOVERAGE=25 LONGJUMPCOV=50, RunAllpath-sLG: THREADS=8 RUN=stdshredpairs TARGETS=standard VAPIWARNONLY=True OVERWRITE=True).

The final draft assembly contained 157 contigs in 156 scaffolds. The total size of the genome is 6.9 Mb and the final assembly is based on 1,962 Mb of Illumina data, which provides an average 285× coverage of the genome.

Genome annotation

Genes were identified using Prodigal [41] as part of the Oak Ridge National Laboratory genome annotation pipeline. The predicted CDSs were translated and used to search the National Center for Biotechnology Information (NCBI) non-redundant database, UniProt, TIGRFam, Pfam, PRIAM, KEGG, COG, and InterPro databases. These data sources were combined to assert a product description for each predicted protein. Non-coding genes and miscellaneous features were predicted using tRNAscan-SE [42] RNAMMer [43], Rfam [44], TMHMM [45], and SignalP [46]. Additional gene prediction analyses and functional annotation were performed within the Integrated Microbial Genomes (IMG-ER) platform [47].

Genome properties

The genome is 6,900,273 nucleotides with 61.98% GC content (Table 4) and comprised of 156 scaffolds (Figures 3a,3b,3c,3d,3e). From a total of 6,770 genes, 6,683 were protein encoding and 87 RNA only encoding genes. The majority of genes (78.79%) were assigned a putative function whilst the remaining genes were annotated as hypothetical. The distribution of genes into COGs functional categories is presented in Table 5.

Table 4. Genome Statistics for *Ensifer meliloti* strain RRI128

Attribute	Value	% of Total
Genome size (bp)	6,900,273	100.00
DNA coding region (bp)	5,931,611	85.96
DNA G+C content (bp)	4,276,906	61.98
Number of scaffolds	156	
Number of contigs	157	
Total gene	6,770	100.00
RNA genes	87	1.29
rRNA operons	1*	
Protein-coding genes	6,683	98.71
Genes with function prediction	5,334	78.79
Genes assigned to COGs	5,314	78.49
Genes assigned Pfam domains	5,505	81.31
Genes with signal peptides	569	8.40
Genes with transmembrane helices	1,483	21.91
CRISPR repeats	0	

*2 copies of 5S, 1 copy of 16S and 1 copy of 23S rRNA

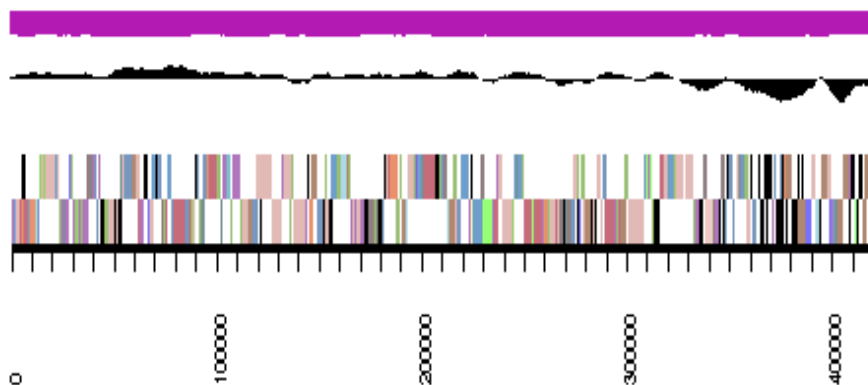


Figure 3a. Graphical map of YU7DRAFT_scaffold_0.1 of the genome of *Ensifer meliloti* strain RRI128. From bottom to the top of each scaffold: Genes on forward strand (color by COG categories as denoted by the IMG platform), Genes on reverse strand (color by COG categories), RNA genes (tRNAs green, sRNAs red, other RNAs black), GC content, GC skew.

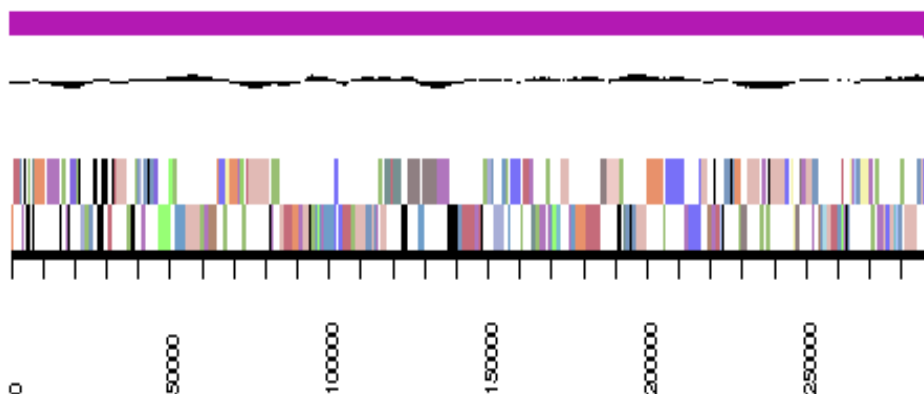


Figure 3b. Graphical map of YU7DRAFT_scaffold_1.2 of the genome of *Ensifer meliloti* strain RRI128. From bottom to the top of each scaffold: Genes on forward strand (color by COG categories as denoted by the IMG platform), Genes on reverse strand (color by COG categories), RNA genes (tRNAs green, sRNAs red, other RNAs black), GC content, GC skew.

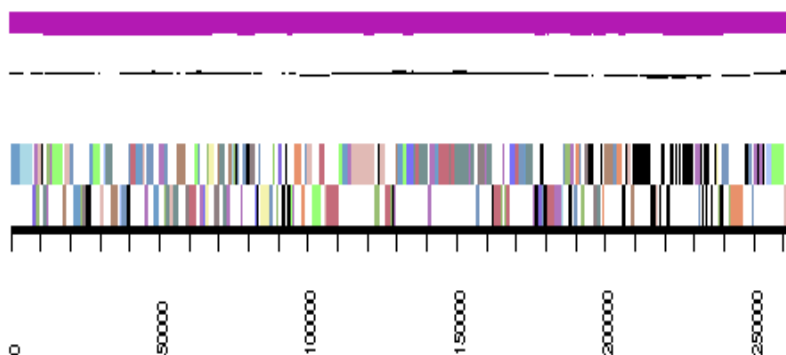


Figure 3c. Graphical map of YU7DRAFT_scaffold_2.3 of the genome of *Ensifer meliloti* strain RRI128. From bottom to the top of each scaffold: Genes on forward strand (color by COG categories as denoted by the IMG platform), Genes on reverse strand (color by COG categories), RNA genes (tRNAs green, sRNAs red, other RNAs black), GC content, GC skew.

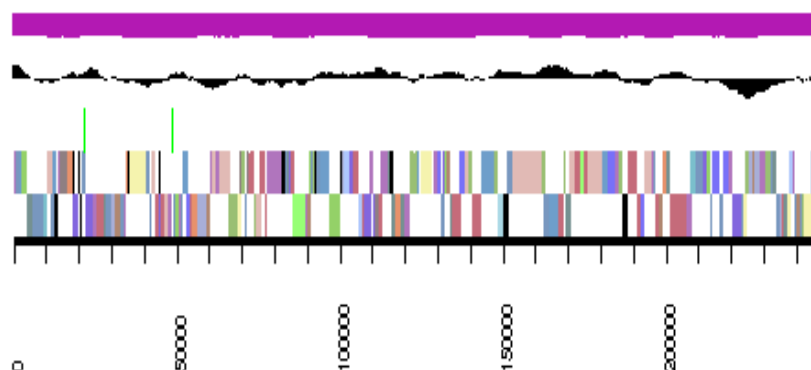


Figure 3d. Graphical map of YU7DRAFT_scaffold_3.4 of the genome of *Ensifer meliloti* strain RRI128. From bottom to the top of each scaffold: Genes on forward strand (color by COG categories as denoted by the IMG platform), Genes on reverse strand (color by COG categories), RNA genes (tRNAs green, sRNAs red, other RNAs black), GC content, GC skew.

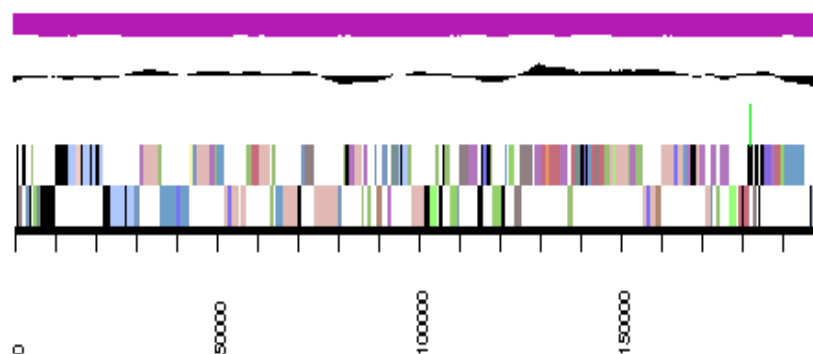


Figure 3e. Graphical map of YU7DRAFT_scaffold_4.5 of the genome of *Ensifer meliloti* strain RRI128. From bottom to the top of each scaffold: Genes on forward strand (color by COG categories as denoted by the IMG platform), Genes on reverse strand (color by COG categories), RNA genes (tRNAs green, sRNAs red, other RNAs black), GC content, GC skew.

Table 5. Number of protein coding genes of *Ensifer meliloti* strain RRI128 associated with the general COG functional categories

Code	Value	%age	COG Category
J	202	3.41	Translation, ribosomal structure and biogenesis
A	0	0.00	RNA processing and modification
K	520	8.78	Transcription
L	272	4.59	Replication, recombination and repair
B	2	0.03	Chromatin structure and dynamics
D	47	0.79	Cell cycle control, mitosis and meiosis
Y	0	0.00	Nuclear structure
V	61	1.03	Defense mechanisms
T	237	4.00	Signal transduction mechanisms
M	294	4.97	Cell wall/membrane biogenesis
N	75	1.27	Cell motility
Z	0	0.00	Cytoskeleton
W	1	0.02	Extracellular structures
U	116	1.96	Intracellular trafficking and secretion
O	186	3.14	Posttranslational modification, protein turnover, chaperones
C	355	6.00	Energy production conversion
G	594	10.03	Carbohydrate transport and metabolism
E	673	11.37	Amino acid transport metabolism
F	108	1.82	Nucleotide transport and metabolism
H	197	3.33	Coenzyme transport and metabolism
I	216	3.65	Lipid transport and metabolism
P	306	5.17	Inorganic ion transport and metabolism
Q	168	2.84	Secondary metabolite biosynthesis, transport and catabolism
R	705	11.91	General function prediction only
S	585	9.88	Function unknown
-	1,456	21.51	Not in COGS

Acknowledgements

This work was performed under the auspices of the US Department of Energy's Office of Science, Biological and Environmental Research Program, and by the University of California, Lawrence Berkeley National Laboratory under contract No. DE-AC02-05CH11231, Lawrence Livermore National Laboratory under Contract No. DE-AC52-07NA27344, and Los Alamos National Laboratory

under contract No. DE-AC02-06NA25396. We gratefully acknowledge the funding received from the Murdoch University Strategic Research Fund through the Crop and Plant Research Institute (CaPRI) and the Centre for Rhizobium Studies (CRS) at Murdoch University.

References

1. Bullard GK, Roughley RJ, Pulsford DJ. The legume inoculant industry and inoculant quality control in Australia: 1953–2003. *Aust J Exp Agric* 2005; **45**:127-140. <http://dx.doi.org/10.1071/EA03159>
2. Ballard RA, Slattery JF, Charman N. Host range and saprophytic competence of *Sinorhizobium meliloti* - a comparison of strains for the inoculation of lucerne, strand and disc medics. *Aust J Exp Agric* 2005; **45**:209-216. <http://dx.doi.org/10.1071/EA03126>
3. Howieson JG, Nutt B, Evans P. Estimation of host-strain compatibility for symbiotic N-fixation between *Rhizobium meliloti*, several annual species of *Medicago* and *Medicago sativa*. *Plant Soil* 2000; **219**:49-55. <http://dx.doi.org/10.1023/A:1004795617375>
4. Brockwell J, Hely FW. Symbiotic characteristics of *Rhizobium meliloti*: an appraisal of the systematic treatment of nodulation and nitrogen fixation interactions between hosts and rhizobia of diverse origins. *Australian Journal of Agricultural Economics* 1966; **17**:885-889.
5. Munns DN. Nodulation of *Medicago sativa* in solution culture. 1. Acid-sensitive steps. *Plant Soil* 1968; **28**:129-146. <http://dx.doi.org/10.1007/BF01349181>
6. Garau G, Reeve WG, Brau L, Yates RJ, James D, Tiwari R, O'Hara GW, Howieson JG. The symbiotic requirements of different *Medicago* spp. suggest the evolution of *Sinorhizobium meliloti* and *S. medicae* with hosts differentially adapted to soil pH. *Plant Soil* 2005; **276**:263-277. <http://dx.doi.org/10.1007/s11104-005-0374-0>
7. Charman N, Ballard RA, Humphries AW, Auricht GC. Improving lucerne nodulation at low pH: contribution of rhizobial and plant genotype to the nodulation of lucerne seedlings growing in solution culture at pH 5. *Aust J Exp Agric* 2008; **48**:512-517. <http://dx.doi.org/10.1071/EA07138>
8. Charman N, Humphries A, Smith D, Drew E, Marshall E, Denton M, Hayes R, Venkatanagappa S, Ballard R. Selection of lucerne and rhizobia for improved nodulation at low pH. 15th Australian Nitrogen Fixation Conference Margaret River, Western Australia 2009. p 49.
9. McInnes A, Holford P, Thies JE. Characterisation of dry and mucoid colonies isolated from Australian rhizobial inoculant strains for *Medicago* species. *Anim Prod Sci* 2005; **45**:151-159. <http://dx.doi.org/10.1071/EA03125>
10. Garau G, Yates RJ, Deiana P, Howieson JG. Novel strains of nodulating *Burkholderia* have a role in nitrogen fixation with Papilionoid herbaceous legumes adapted to acid, infertile soils. *Soil Biol Biochem* 2009; **41**:125-134. <http://dx.doi.org/10.1016/j.soilbio.2008.10.011>
11. Gemell LG, Hartley EJ, Herridge DF. Point-of-sale evaluation of preinoculated and custom-inoculated pasture legume seed. *Aust J Exp Agric* 2005; **45**:161-169. <http://dx.doi.org/10.1071/EA03151>
12. Hartley E, Gemell G, Deaker R. Some factors that contribute to poor survival of rhizobia on preinoculated legume seed. *Crop Pasture Sci* 2012; **63**:858-865. <http://dx.doi.org/10.1071/CP12132>
13. Beringer JE. R factor transfer in *Rhizobium leguminosarum*. *J Gen Microbiol* 1974; **84**:188-198. [PubMed](http://pubmed.ncbi.nlm.nih.gov/10109900221287-84-1-188/) <http://dx.doi.org/10.1099/00221287-84-1-188>
14. Howieson JG, Ewing MA, D'antuono MF. Selection for acid tolerance in *Rhizobium meliloti*. *Plant Soil* 1988; **105**:179-188. <http://dx.doi.org/10.1007/BF02376781>
15. Field D, Garrity G, Gray T, Morrison N, Selengut J, Sterk P, Tatusova T, Thomson N, Allen M, Angiuoli SV, et al. Towards a richer description of our complete collection of genomes and metagenomes "Minimum Information about a Genome Sequence" (MIGS) specification. *Nat Biotechnol* 2008; **26**:541-547. [PubMed](http://pubmed.ncbi.nlm.nih.gov/101038/nbt1360/) <http://dx.doi.org/10.1038/nbt1360>
16. Woese CR, Kandler O, Wheelis ML. Towards a natural system of organisms: proposal for the domains *Archaea*, *Bacteria*, and *Eucarya*. *Proc Natl Acad Sci USA* 1990; **87**:4576-4579. [PubMed](http://pubmed.ncbi.nlm.nih.gov/101073/pnas.87.12.4576/) <http://dx.doi.org/10.1073/pnas.87.12.4576>
17. Chen WX, Wang ET, Kuykendall LD. *The Proteobacteria*. New York: Springer - Verlag; 2005.
18. Garrity GM, Bell JA, Lilburn T. Class I. *Alphaproteobacteria* class. In: Garrity GM, Brenner DJ, Krieg NR, Staley JT, editors. *Bergey's Manual of Systematic Bacteriology*. Second ed: New York: Springer - Verlag; 2005. p 1.
19. Kuykendall LD. Order VI. *Rhizobiales* ord. nov. In: Garrity GM, Brenner DJ, Krieg NR, Staley JT, editors. *Bergey's Manual of Systematic Bacteriology*. Second ed: New York: Springer - Verlag; 2005. p 324.

20. Kuykendall LD. Family I. *Rhizobiaceae* In: Garrity GM, Brenner DJ, Krieg NR, Staley JT, editors. *Bergey's Manual of Systematic Bacteriology*. New York: Springer - Verlag; 2005. p 324.
21. Young JM. The genus name *Ensifer* Casida 1982 takes priority over *Sinorhizobium* Chen et al. 1988, and *Sinorhizobium morelense* Wang et al. 2002 is a later synonym of *Ensifer adhaerens* Casida 1982. Is the combination "*Sinorhizobium adhaerens*" (Casida 1982) Willems et al. 2003 legitimate? Request for an Opinion. *Int J Syst Evol Microbiol* 2003; **53**:2107-2110. [PubMed](#) <http://dx.doi.org/10.1099/ijs.0.02665-0>
22. Judicial Commission of the International Committee on Systematics of P. The genus name *Sinorhizobium* Chen et al. 1988 is a later synonym of *Ensifer* Casida 1982 and is not conserved over the latter genus name, and the species name '*Sinorhizobium adhaerens*' is not validly published. Opinion 84. *International Journal of Systematic and Evolutionary Microbiology* 2008;58(Pt 8):1973.
23. Rome S, Brunel B, Normand P, Fernandez M, Cleyet-Marel JC. Evidence that two genomic species of *Rhizobium* are associated with *Medicago truncatula*. *Arch Microbiol* 1996; **165**. [PubMed](#) <http://dx.doi.org/10.1007/s002030050328>
24. Rome S, Cleyet-Marel JC, Materon LA, Normand P, Brunel B. Rapid identification of *Medicago* nodulating strains by using two oligonucleotide probes complementary to 16S rDNA sequences. *Can J Microbiol* 1997; **43**:854-861. [PubMed](#) <http://dx.doi.org/10.1139/m97-124>
25. Biological Agents. Technical rules for biological agents. TRBA (<http://www.baua.de>):466.
26. Ashburner M, Ball CA, Blake JA, Botstein D, Butler H, Cherry JM, Davis AP, Dolinski K, Dwight SS, Eppig JT, et al. Gene ontology: tool for the unification of biology. The Gene Ontology Consortium. *Nat Genet* 2000; **25**:25-29. [PubMed](#) <http://dx.doi.org/10.1038/75556>
27. Tamura K, Peterson D, Peterson N, Stecher G, Nei M, Kumar S. MEGA5: Molecular evolutionary genetics analysis using Maximum Likelihood, evolutionary distance, and Maximum Parsimony methods. *Mol Biol Evol* 2011; **28**:2731-2739. [PubMed](#) <http://dx.doi.org/10.1093/molbev/msr121>
28. Felsenstein J. Confidence limits on phylogenies: an approach using the bootstrap. *Evolution* 1985; **39**:783-791. <http://dx.doi.org/10.2307/2408678>
29. Liolios K, Mavromatis K, Tavernarakis N, Kyrpides NC. The Genomes On Line Database (GOLD) in 2007: status of genomic and metagenomic projects and their associated metadata. *Nucleic Acids Res* 2008; **36**:D475-D479. [PubMed](#) <http://dx.doi.org/10.1093/nar/gkm884>
30. Galibert F, Finan TM, Long SR, Puhler A, Abola P, Ampe F, Barloy-Hubler F, Barnett MJ, Becker A, Boistard P, et al. The composite genome of the legume symbiont *Sinorhizobium meliloti*. *Science* 2001; **293**:668-672. [PubMed](#) <http://dx.doi.org/10.1126/science.1060966>
31. Reeve W, Chain P, O'Hara G, Ardley J, Nandesena K, Brau L, Tiwari R, Malfatti S, Kiss H, Lapidus A, et al. Complete genome sequence of the *Medicago* microsymbiont *Ensifer (Sinorhizobium) medicae* strain WSM419. *Stand Genomic Sci* 2010; **2**:77-86. [PubMed](#) <http://dx.doi.org/10.4056/signs.43526>
32. Small E. *Alfalfa and Relatives: Evolution and Classification of Medicago*. Ottawa, Canada: NRC Reserach Press; 2011.
33. Ballard RA, Charman N. Nodulation and growth of pasture legumes with naturalised soil rhizobia. 1. Annual *Medicago* spp. *Aust J Exp Agric* 2000; **40**:939-948. <http://dx.doi.org/10.1071/EA99112>
34. Howieson JH, Ballard RA, deKoning C, Sandral G, Charman N. *Trigonella balansae*- a new pasture legume for the alkaline soils of southern Australia. 10th Australian Agronomy Conference. Hobart, Australia.: Australian Society of Agronomy; 2001.
35. Reeve WG, Tiwari RP, Worsley PS, Dilworth MJ, Glenn AR, Howieson JG. Constructs for insertional mutagenesis, transcriptional signal localization and gene regulation studies in root nodule and other bacteria. *Microbiology* 1999; **145**:1307-1316. [PubMed](#) <http://dx.doi.org/10.1099/13500872-145-6-1307>
36. JGI user home. <http://my.jgi.doe.gov/general/index.html>
37. Bennett S. Solexa Ltd. *Pharmacogenomics* 2004; **5**:433-438. [PubMed](#) <http://dx.doi.org/10.1517/14622416.5.4.433>
38. Zerbino DR. Using the Velvet *de novo* assembler for short-read sequencing technologies. *Current Protocols in Bioinformatics* 2010;Chapter 11:Unit 11 5.
39. wgsim. <https://github.com/lh3/wgsim>
40. Gnerre S, MacCallum I, Przybylski D, Ribeiro FJ, Burton JN, Walker BJ, Sharpe T, Hall G, Shea TP,

- Sykes S, et al. High-quality draft assemblies of mammalian genomes from massively parallel sequence data. *Proc Natl Acad Sci USA* 2011; **108**:1513-1518. [PubMed](#) <http://dx.doi.org/10.1073/pnas.1017351108>
41. Hyatt D, Chen GL, Locascio PF, Land ML, Larimer FW, Hauser LJ. Prodigal: prokaryotic gene recognition and translation initiation site identification. *BMC Bioinformatics* 2010; **11**:119. [PubMed](#) <http://dx.doi.org/10.1186/1471-2105-11-119>
 42. Lowe TM, Eddy SR. tRNAscan-SE: a program for improved detection of transfer RNA genes in genomic sequence. *Nucleic Acids Res* 1997; **25**:955-964. [PubMed](#)
 43. Lagesen K, Hallin P, Rodland EA, Staerfeldt HH, Rognes T, Ussery DW. RNAmmer: consistent and rapid annotation of ribosomal RNA genes. *Nucleic Acids Res* 2007; **35**:3100-3108. [PubMed](#) <http://dx.doi.org/10.1093/nar/gkm160>
 44. Griffiths-Jones S, Bateman A, Marshall M, Khanna A, Eddy SR. Rfam: an RNA family database. *Nucleic Acids Res* 2003; **31**:439-441. [PubMed](#) <http://dx.doi.org/10.1093/nar/gkg006>
 45. Krogh A, Larsson B, von Heijne G, Sonnhammer EL. Predicting transmembrane protein topology with a hidden Markov model: application to complete genomes. *J Mol Biol* 2001; **305**:567-580. [PubMed](#) <http://dx.doi.org/10.1006/jmbi.2000.4315>
 46. Bendtsen JD, Nielsen H, von Heijne G, Brunak S. Improved prediction of signal peptides: SignalP 3.0. *J Mol Biol* 2004; **340**:783-795. [PubMed](#) <http://dx.doi.org/10.1016/j.jmb.2004.05.028>
 47. Markowitz VM, Mavromatis K, Ivanova NN, Chen IM, Chu K, Kyrpides NC. IMG ER: a system for microbial genome annotation expert review and curation. *Bioinformatics* 2009; **25**:2271-2278. [PubMed](#) <http://dx.doi.org/10.1093/bioinformatics/btp393>